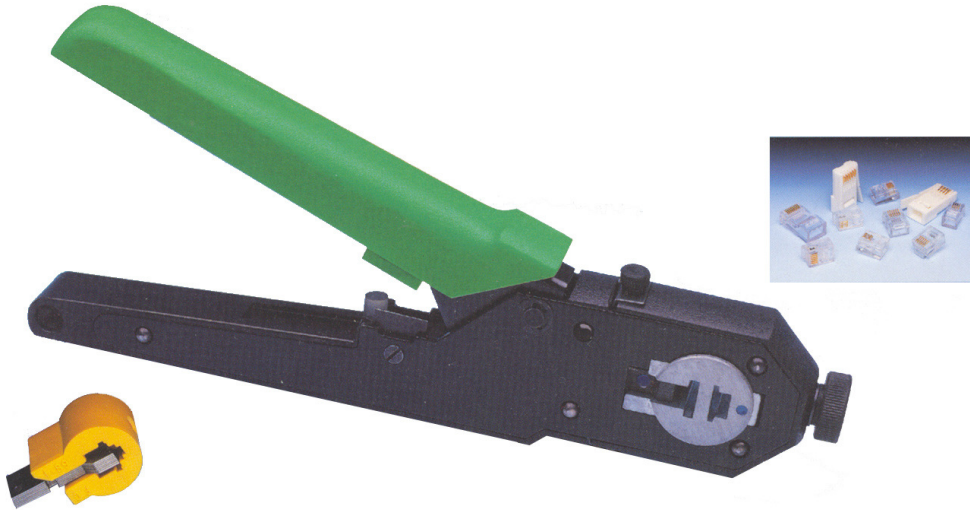


Cat. No. 05920

CRIMP-ALL

Modular connector universal crimping tool. This steel frame, vertical crimping motion tool, crimps all sizes of RJ, MMJ and DEC modular connectors and cordages. Fast exchange of punch and die sets ensures the ability to change the settings instantly to suit all crimping requirements. The tool is equipped with a cutter and strips to proper length both round and flat cables in preparation for crimping.

Ratchet controlled crimping with dual strain relief crimps for maximum pull out strength. The tool comes packed in a smart case with the number of punch and die sets as required.

- **Fast Exchange of Die and Punch.**
- **Ratchet Controlled Crimping.**
- **Strips Round and Flat Cables.**

Technical Specifications

Capacity:
Crimping: BT630A and 631A - 4 & 6 way,
Molex FC-68 4 & 6 way,
RJ11 - 2,4,6 way
RJ-45 - 8 way

Stripping &
Cutting: All Round and Flat Data
Com Cables

Dimensions: 180 x 44 x 16mm

Weight: 180gms